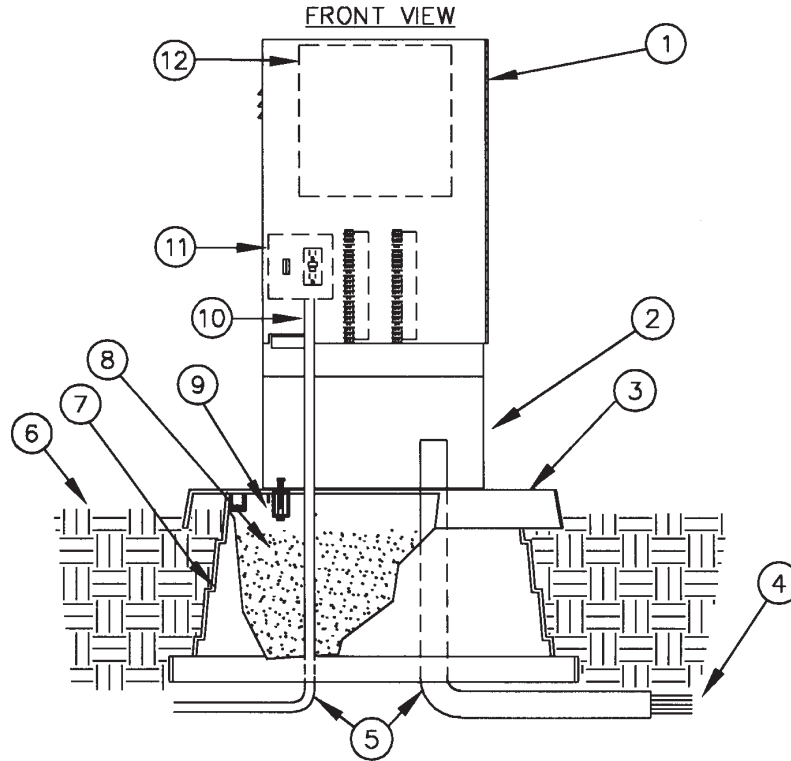


**QP Series**

**INSTALLATION DETAILS**



- |  |  |
|--|--|
| 1. Controller Enclosure  | 8. Fill inside base with pea gravel                                      |
| 2. Optional Pedestal   | 9. QuickPad fastening bracket (2)  |
| 3. QuickPad- 3/16" min. thickness aluminum powder coated preformed pad | 10. 120 volt service conduit   |
| 4. Direct burial control wires to control valves                       | 11. Controller sub-assembly (CSA) includes terminal strips with placards |
| 5. PVC long sweep ells   | 12. Automatic controller   |
| 6. Finish grade 2" below top of QuickPad                               |  |
| 7. QuickPad support base   |  |

**SPECIFICATIONS**

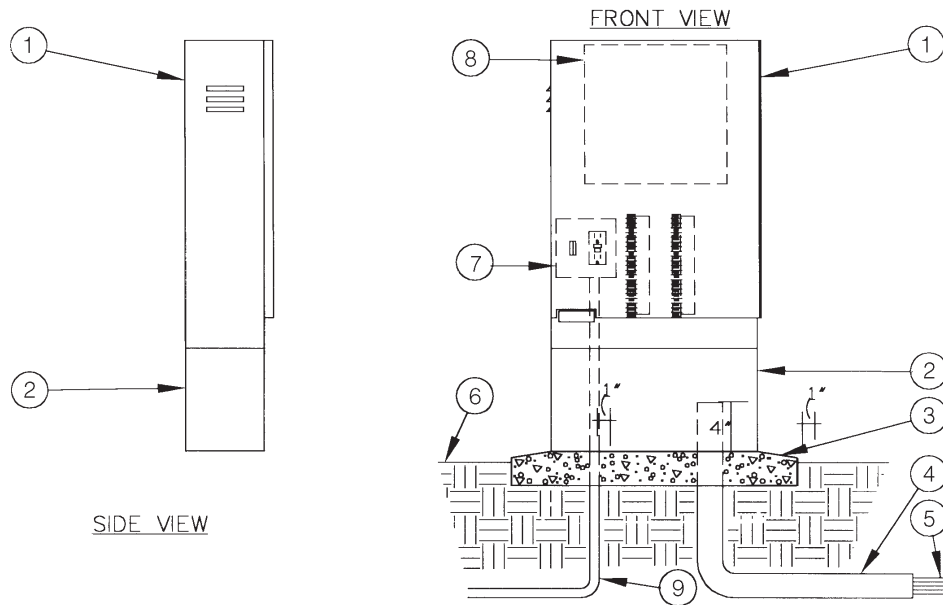
The controller enclosure mounting pad assembly shall consist of a reinforced plastic support base, a three sixteenth inch thick 5052 H32 Marine Grade Aluminum mounting pad and 304 grade stainless steel fastening brackets.

The support base shall be installed and compacted in earth allowing the top two inches of the support base to be exposed above the earth. The 5052 H32 Marine Grade Aluminum mounting pad shall be clamped to the support

base with the stainless steel fastening brackets. The controller enclosure shall be bolted from the inside of the enclosure to the mounting pad, thus preventing outside access to the mounting bolts.

# Front Entry Enclosure

## INSTALLATION DETAILS



1. Controller enclosure
2. Optional pedestal
3. Poured concrete base—6" min. thickness—extend concrete 6" beyond outside dimensions of enclosure with 1/2% slope for drainage
4. PVC long sweep ell—size as required
5. Direct burial control wires to control valves
6. Finish grade
7. Controller sub-assembly (CSA) includes GFI & terminal strips with placards
8. Automatic controller
9. 120 volt service in conduit

## SPECIFICATIONS

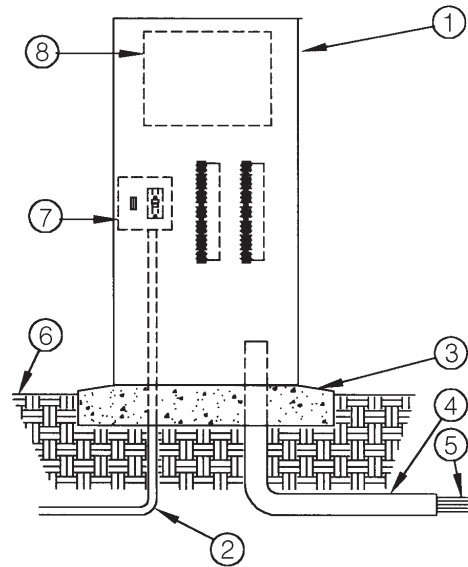
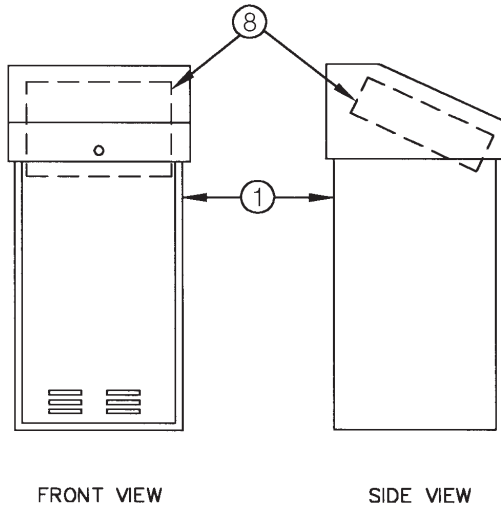
The enclosure shall be of a vandal and weather resistant nature manufactured entirely of 304 grade stainless steel. The main housing shall be louvered upper and lower body to allow for cross flow ventilation. Filter screens shall cover all louvers to deflect against water spray, insects and dust. A stainless steel backboard shall be provided for the purpose of mounting electronic and various other types of equipment. The backboard shall be mounted on four stainless steel bolts that will allow for removal of

the backboard. The inside door area shall provide adequate storage for plans, operating instructions, and scheduling information. The enclosure door shall have a continuous stainless steel piano hinge, carriage bolted on one side, and a three point locking mechanism on the other side. The edge of the door shall be hemmed to eliminate any sharp edges. The handle controlling the locking mechanism shall be located at the base of the door and be concealed within the surface of the door. A stainless

steel cam style lock shall be mounted in the door and a provision for a padlock shall be included within the locking mechanism. The enclosure shall be manufactured with a continuous drainage channel which mates with a teardrop shaped, hollow center, water-tight, thermoplastic door seal. The above described product shall be a NEMA TYPE 3R Rainproof Enclosure as listed by Underwriter Laboratories, Inc.

# Top Entry Enclosure

## INSTALLATION DETAILS



1. Controller enclosure
2. 120 volt service in conduit
3. Poured concrete base—6" min. thickness—extend concrete 6" beyond outside dimensions of enclosure with 1/2% slope for drainage
4. PVC long sweep ell—size as required

5. Direct burial control wires to control valves
6. Finish grade
7. Controller sub-assembly (CSA) includes GFI & terminal strips with placards
8. Automatic controller

## SPECIFICATIONS

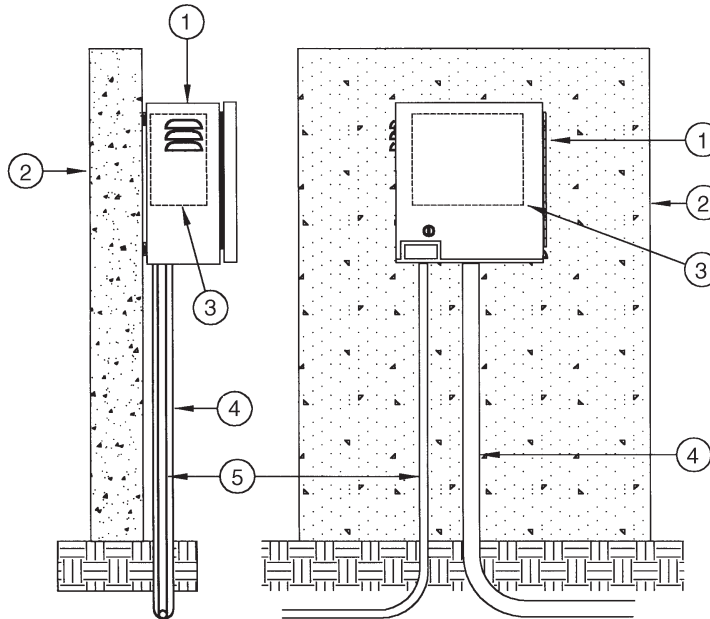
The enclosure shall be of a vandal and weather resistant nature manufactured entirely of 304 grade stainless steel. The main housing door shall be louvered at the bottom and equipped with a tear drop shaped, hollow center thermoplastic door seal. The entry lid shall be louvered on the back side to allow for cross flow ventilation. Filter screens shall cover all louvers to deflect against water spray, insects and dust. The top entry lid shall be assisted by two gas

springs for easy access. The edge of the lid shall be hemmed to eliminate any sharp edges. The top entry lid shall have a continuous stainless steel piano hinge, carriage bolted on the rear, and a three point locking mechanism on the front. A stainless steel cam style lock shall be mounted in the lid and a provision for a padlock shall be included within the locking mechanism. A removable stainless steel tray shall be provided for the purpose of mounting electronics

and various other types of equipment. A removable stainless steel backboard shall be provided in the lower body and mounted on four stainless steel bolts. The inside door area shall provide adequate storage for plans, operating instructions, and scheduling information. The above described product shall be a NEMA TYPE 3R Rainproof Enclosure as listed by Underwriter Laboratories, Inc.

# Wall Mount Enclosure

## INSTALLATION DETAILS



1. Controller enclosure
2. Wall
3. Automatic controller
4. 24 volt conduit
5. 120 volt conduit

NOTE: Install controller enclosure to wall as per manufacturer's installation instructions

## SPECIFICATIONS

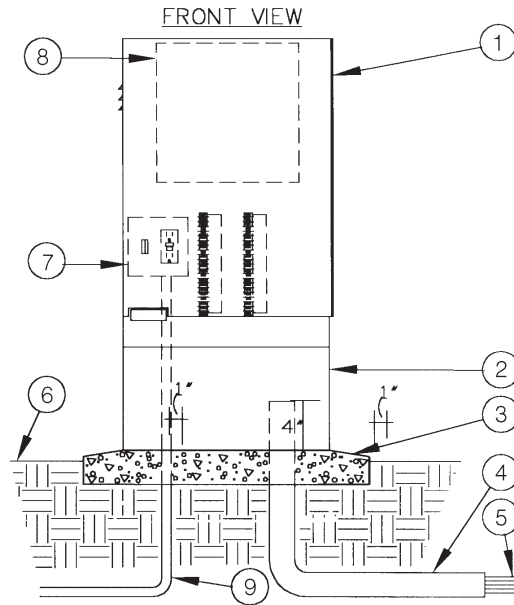
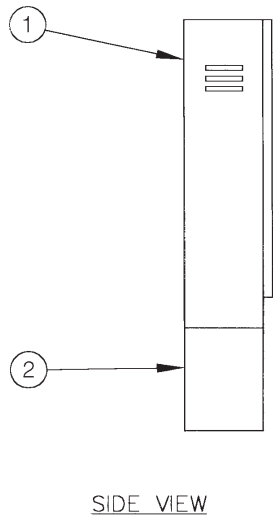
The enclosure shall be of a vandal and weather resistant nature manufactured entirely of 304 grade stainless steel. The main housing shall be louvered upper and lower body to allow for cross flow ventilation. Filter screens shall cover all louvers to deflect against water spray, insects and dust. A stainless steel backboard shall be provided for the purpose of mounting electronic and various other types of equipment. The backboard shall be mounted on four stainless steel bolts that will allow for removal of

the backboard. The inside door area shall provide adequate storage for plans, operating instructions and scheduling information. The enclosure door shall have a continuous stainless steel piano hinge, carriage bolted on one side, and a two-point locking mechanism on the other side. The edge of the door shall be hemmed to eliminate any sharp edges. The handle controlling the locking mechanism shall be located at the base of the door and be concealed within the surface of the door. A

stainless steel cam style lock shall be mounted in the door and the provision for a padlock shall be included within the locking mechanism. The enclosure shall be manufactured with a continuous drainage channel which mates with a tear-drop shaped, hollow center, water-tight, thermoplastic door seal. The above described product shall be a NEMA TYPE 3R Rainproof Enclosure as listed by Underwriter Laboratories, Inc.

# Front Entry Enclosure

## INSTALLATION DETAILS



- |   |   |
|---|---|
| <ol style="list-style-type: none"> <li>1. Controller enclosure</li> <li>2. Optional pedestal</li> <li>3. Poured concrete base—6" min. thickness—extend concrete 6" beyond outside dimensions of enclosure with 1/2% slope for drainage</li> <li>4. PVC long sweep ell—size as required</li> </ol> | <ol style="list-style-type: none"> <li>5. Direct burial control wires to control valves</li> <li>6. Finish grade</li> <li>7. Controller sub-assembly (CSA) includes GFI &amp; terminal strips with placards</li> <li>8. Automatic controller</li> <li>9. 120 volt service in conduit</li> </ol> |
|---|---|

## SPECIFICATIONS

The enclosure shall be of a vandal and weather resistant nature manufactured entirely of cold rolled steel finished with a polyester TGIC powder coating having a minimum thickness of 2.5 mils. The main housing shall be louvered upper and lower body to allow for cross flow ventilation. Filter screens shall cover all louvers to deflect against water spray, insects and dust. A stainless steel backboard shall be provided for the purpose of mounting electronic and various other types of equipment. The backboard shall

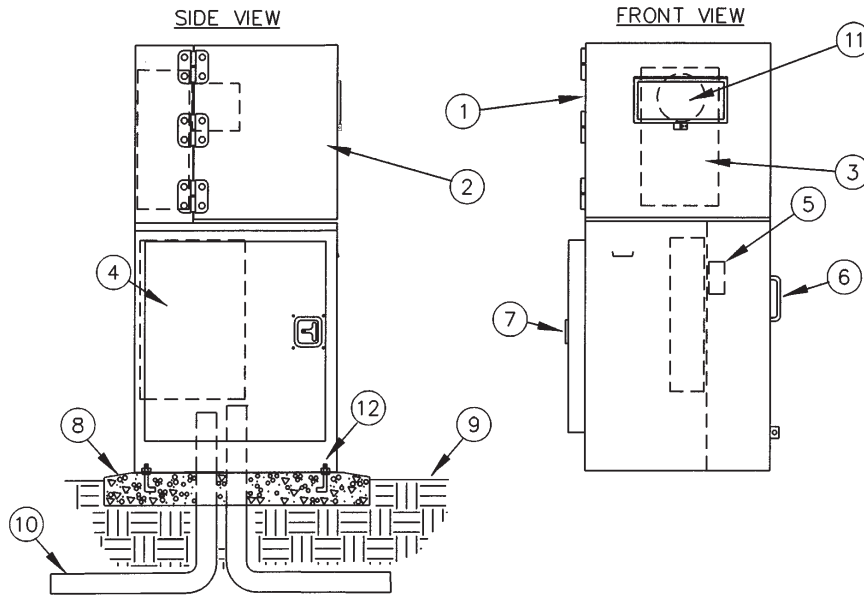
be mounted on four stainless steel bolts that will allow for removal of the backboard. The inside door area shall provide adequate storage for plans, operating instructions and scheduling information. The enclosure door shall have a continuous stainless steel piano hinge, carriage bolted on one side, and a three-point locking mechanism on the other side. The edge of the door shall be hemmed to eliminate any sharp edges. The stainless steel handle controlling the locking mechanism shall be located at the base of the door

and be concealed within the surface of the door. A stainless steel cam style lock shall be mounted in the door and a provision for a padlock shall be included within the locking mechanism. The enclosure shall be manufactured with a continuous drainage channel which mates with a teardrop shaped, hollow center, water-tight, thermoplastic door seal. The above described product shall be a NEMA TYPE 3R Rainproof Enclosure as listed by Underwriter Laboratories, Inc.

# 100 Amp

**Models: MPS-A16, MPS-B16, MPS-D18**

## INSTALLATION DETAILS



1. StrongBox metered enclosure, stainless steel, NEMA TYPE 3R—18" x 20" x 52" # MPS-XXX-XX
2. Hinged removable lid
3. Meter socket with test blocks
4. Load center
5. Landing lugs
6. Landing lug compartment
7. Load center compartment
8. Poured concrete base—6" min. thickness—extend 6" beyond outside dimensions of enclosure with 1/2% slope for drainage
9. Finish grade
10. Underground service
11. Meter viewing window 5" x 10"
12. 3/8" stainless anchor bolts

## SPECIFICATIONS

The meter pedestal shall be made entirely of 304 grade stainless steel, #4 brushed finish, utilizing all welded construction providing superior vandal and weather resistance.

The top shall be a side swing style that locks out for safety. The side swing top shall fully expose the meter compartment for ease of setting the meter and access to the test blocks. The top shall be supported by 3 large all stainless steel hinges with 3/8" pins that are "lift off" style allowing the top to be completely removed. A replaceable 5" x 10", 3/16" thick Lexan viewing window shall be provided.

The meter socket test block compartment shall be equipped with a watershed drainage channel and overlapping equip-

ment panels that ensures a watertight design. Within the top meter compartment the meter socket test block assembly shall be installed. The customer shall have the option to have a utility approved main disconnect located in this compartment. The top shall be completely padlockable and accept a utility seal.

The utility compartment shall be located on the right side and house the landing lugs. A cover panel that can accommodate a padlock and utility seal shall be provided.

The left side of the pedestal shall house the 20" x 20" customer electrical compartment. This compartment shall be outfitted with a fully welded and hemmed stainless steel gasketed door that closes against a watershed drainage channel. The door

design and all stainless steel T handle latching system shall ensure water tightness and vandal resistance.

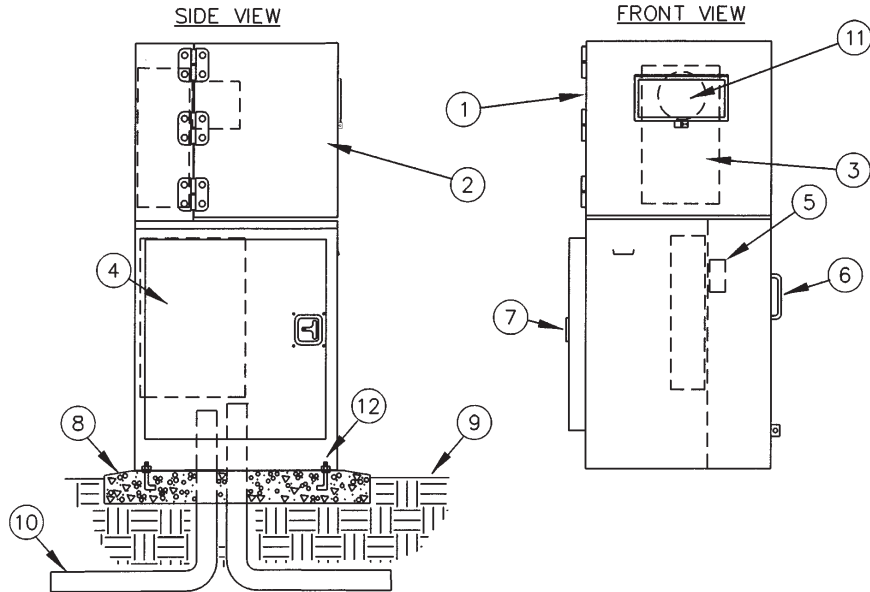
The interior portion of this compartment shall house up to a 30 circuit capable load center with a removable protective panel. The panel shall only expose the breaker switches and shall be held in place by captive thumbscrews. A stainless steel electrical backboard shall be provided for ease of wiring and grounding of electrical components.

The pedestal assembly shall be a single phase or three phase, 120V/240V or 480V rated unit. The enclosure shall be rainproof NEMA TYPE 3R and the assembly shall be UL listed for service entrance equipment.

# 200 Amp

**Models: MPS-C32, MPS-E24,**

## INSTALLATION DETAILS



1. StrongBox metered enclosure, stainless steel, NEMA TYPE 3R—18" x 20" x 52" # MPS-XXX-XX
2. Hinged removable lid
3. Meter socket with test blocks
4. Load center
5. Landing lugs
6. Landing lug compartment
7. Load center compartment

8. Poured concrete base—6" min. thickness—extend 6" beyond outside dimensions of enclosure with 1/2% slope for drainage
9. Finish grade
10. Underground service
11. Meter viewing window 5" x 10"
12. 3/8" stainless anchor bolts

## SPECIFICATIONS

The meter pedestal shall be made entirely of 304 grade stainless steel, #4 brushed finish, utilizing all welded construction providing superior vandal and weather resistance.

The top shall be a side swing style that locks out for safety. The side swing top shall fully expose the meter compartment for ease of setting the meter and access to the test blocks. The top shall be supported by 3 large all stainless steel hinges with 3/8" pins that are "lift off" style allowing the top to be completely removed. A replaceable 5" x 10", 3/16" thick Lexan viewing window shall be provided.

The meter socket test block compartment shall be equipped with a watershed drainage channel and overlapping equip-

ment panels that ensures a watertight design. Within the top meter compartment the meter socket test block assembly shall be installed. The customer shall have the option to have a utility approved main disconnect located in this compartment. The top shall be completely padlockable and accept a utility seal.

The utility compartment shall be located on the right side and house the landing lugs. A cover panel that can accommodate a padlock and utility seal shall be provided.

The left side of the pedestal shall house the 20" x 20" customer electrical compartment. This compartment shall be outfitted with a fully welded and hemmed stainless steel gasketed door that closes against a watershed drainage channel. The door

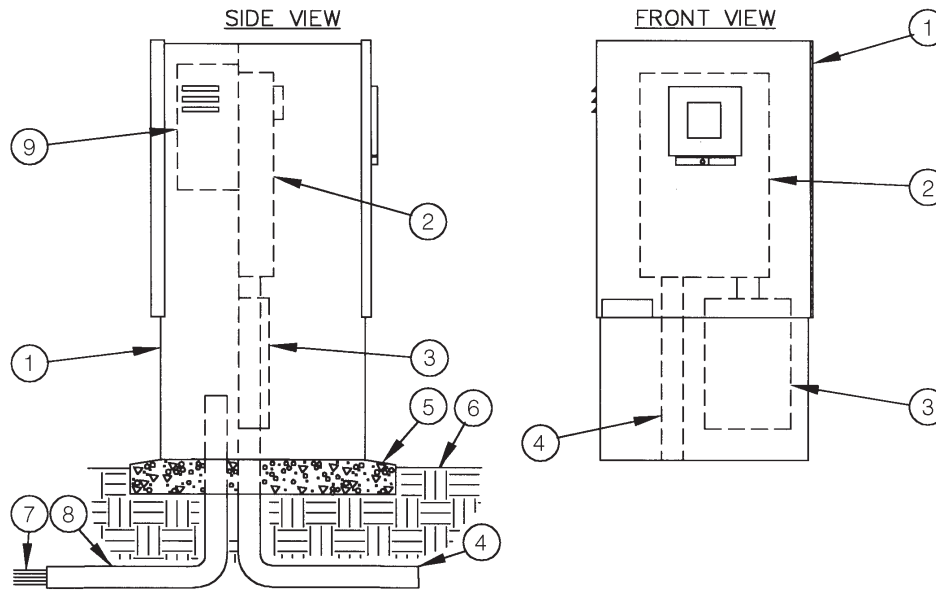
design and all stainless steel T handle latching system shall ensure water tightness and vandal resistance.

The interior portion of this compartment shall house up to a 30 circuit capable load center with a removable protective panel. The panel shall only expose the breaker switches and shall be held in place by captive thumbscrews. A stainless steel electrical backboard shall be provided for ease of wiring and grounding of electrical components.

The pedestal assembly shall be a single phase or three phase, 120V/240V or 480V rated unit. The enclosure shall be rainproof NEMA TYPE 3R and the assembly shall be UL listed for service entrance equipment.

# Metered Enclosure

## INSTALLATION DETAILS



1. Metered controller enclosure
2. Meter socket with test blocks
3. Load center
4. Conduit (not supplied) for line feed into meter
5. Poured concrete base—6" min. thickness—extend 6" beyond outside dimensions of enclosure with 1/2% slope for drainage
6. Finish grade
7. Direct burial control wires to control valves
8. PVC long sweep ell—use one sweep ell per controller
9. Automatic controller

## SPECIFICATIONS

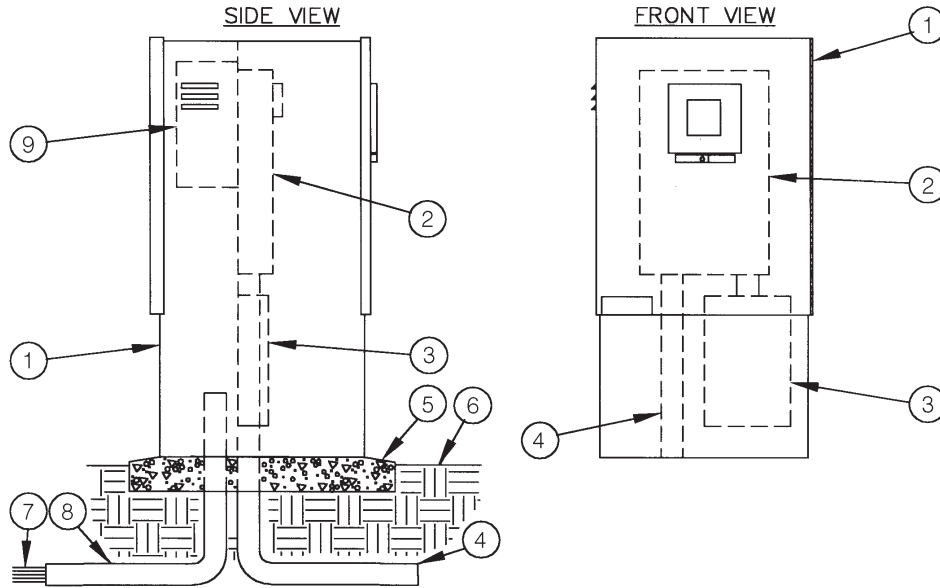
The metered controller enclosure shall be a double door design positioned front and back, vandal and weather resistant, manufactured entirely of stainless steel. The front section shall house a UL listed, E.U.S.E.R.C. approved 100 Amp rated commercial meter socket with test block bypass provision. The back section shall be louvered upper and lower body to allow for cross flow ventilation. Filter screens shall cover all louvers to deflect against water spray, insects and dust. The back section

shall have a stainless steel back-board provided for the purpose of mounting a controller. The back-board shall be mounted on four stainless steel bolts that will allow for removal of the backboard. The inside door area shall provide adequate storage for plans, operating instructions and scheduling information. The enclosure shall have continuous stainless steel piano hinges on one side of each door. The edge of the door shall be hemmed to eliminate any sharp edges. The handles controlling the

locking mechanisms shall be located at the base of the doors and be concealed within the surface of the doors. The provision for padlocks shall be included within the locking mechanisms. The enclosure shall be manufactured with a continuous drainage channel which mates with a tear-drop shaped, hollow center, water-tight, thermoplastic door seal. The above described product shall be a NEMA TYPE 3R Rainproof enclosure as listed by Underwriter Laboratories, Inc.

# Metered Enclosure

## INSTALLATION DETAILS



- |  |  |
|--|--|
| <ol style="list-style-type: none"> <li>1. Metered controller enclosure</li> <li>2. Meter socket with test blocks</li> <li>3. Load center</li> <li>4. Conduit (not supplied) for line feed into meter</li> <li>5. Poured concrete base—6" min. thickness—extend 6" beyond outside dimensions of enclosure with 1/2% slope for drainage</li> </ol> | <ol style="list-style-type: none"> <li>6. Finish grade</li> <li>7. Direct burial control wires to control valves</li> <li>8. PVC long sweep ell—use one sweep ell per controller</li> <li>9. Automatic controller</li> </ol> |
|--|--|

## SPECIFICATIONS

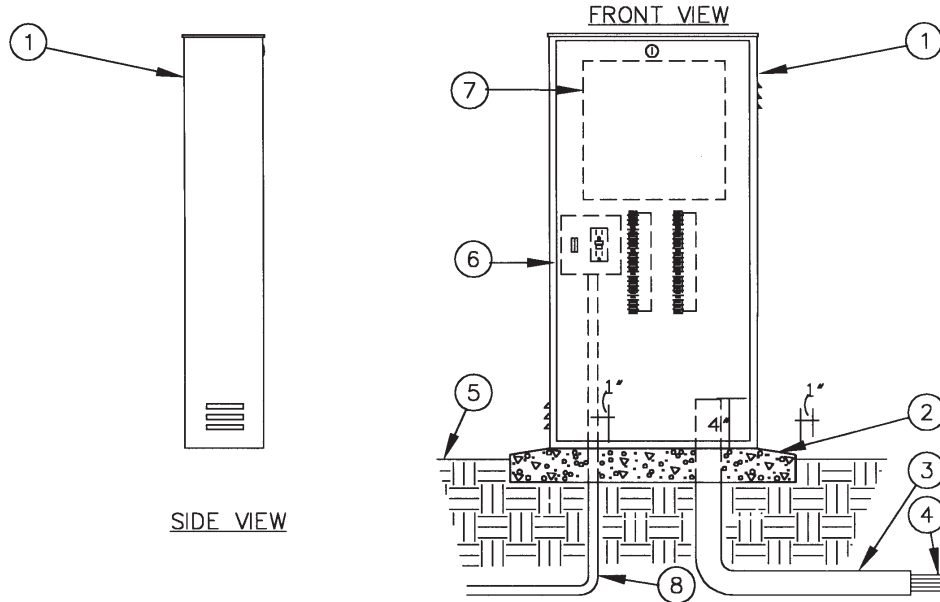
The metered controller enclosure shall be a double door design positioned front and back, vandal and weather resistant, manufactured entirely of cold rolled steel finished with a polyester TGIC powder coating having a minimum thickness of 2.5 mils. The front section shall house a UL listed, E.U.S.E.R.C. approved 100 Amp rated commercial meter socket with test block bypass provision. The back section shall be louvered upper and lower body to allow for cross flow ventilation. Filter screens shall cover all louvers to deflect against water spray,

insects and dust. The back section shall have a stainless steel backboard provided for the purpose of mounting a controller. The backboard shall be mounted on four stainless steel bolts that will allow for removal of the backboard. The inside door area shall provide adequate storage for plans, operating instructions, and scheduling information. The enclosure shall have continuous stainless steel piano hinges on one side of each door, and a three-point locking mechanism on the other side of each door. The edge of the door shall be hemmed to eliminate any sharp

edges. The handles controlling the locking mechanisms shall be located at the base of the doors and be concealed within the surface of the doors. The provision for padlocks shall be included within the locking mechanisms. The enclosure shall be manufactured with a continuous drainage channel which mates with a tear-drop shaped, hollow center, water-tight, thermoplastic door seal. The above described product shall be a NEMA TYPE 3R Rainproof Enclosure as listed by Underwriter Laboratories, Inc.

# Model LD-16S

## INSTALLATION DETAILS



- |  |  |
|--|--|
| <ol style="list-style-type: none"> <li>1. Controller cabinet</li> <li>2. Poured concrete base – 6" Min. thickness – extend 6" beyond outside dimensions of enclosure with 1/2% slope for drainage.</li> <li>3. PVC long sweep ell – use one sweep ell per controller</li> <li>4. Direct burial control wires to control valves.</li> </ol> | <ol style="list-style-type: none"> <li>5. Finish grade</li> <li>6. Controller sub-assembly (CSA) includes GFI and terminal strips with placards.</li> <li>7. Automatic controller</li> <li>8. 120-volt service in conduit</li> </ol> |
|--|--|

## SPECIFICATIONS

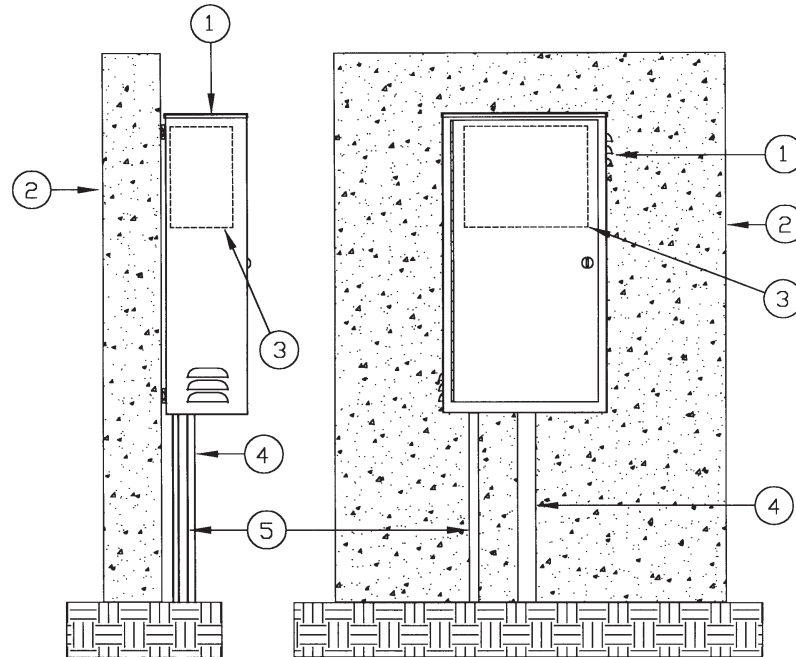
The cabinet shall be of a weather resistant nature manufactured entirely of 304 grade stainless steel. The main housing shall be louvered upper and lower body to allow for crossflow ventilation. Filter screens shall cover all louvers to deflect against water spray, insects and dust. A stainless steel

backboard shall be provided for the purpose of mounting electronic and various other types of equipment. The backboard shall be mounted on four stainless steel bolts that will allow for removal of the backboard. A stainless steel cam style lock shall be mounted in the door. The cabinet shall be equipped

with a teardrop shaped, hollow center, watertight, thermoplastic door seal. The above described product shall be a NEMA TYPE 3R Rainproof Enclosure as listed by Underwriter Laboratories, Inc.

**Model LD-16SW**

**INSTALLATION DETAILS**



- 1. Controller cabinet
- 2. Wall
- 3. Automatic controller
- 4. 24-volt conduit
- 5. 120-volt conduit

**Note:**

Install controller cabinet to a wall as per manufacturer's installation instructions.

**SPECIFICATIONS**

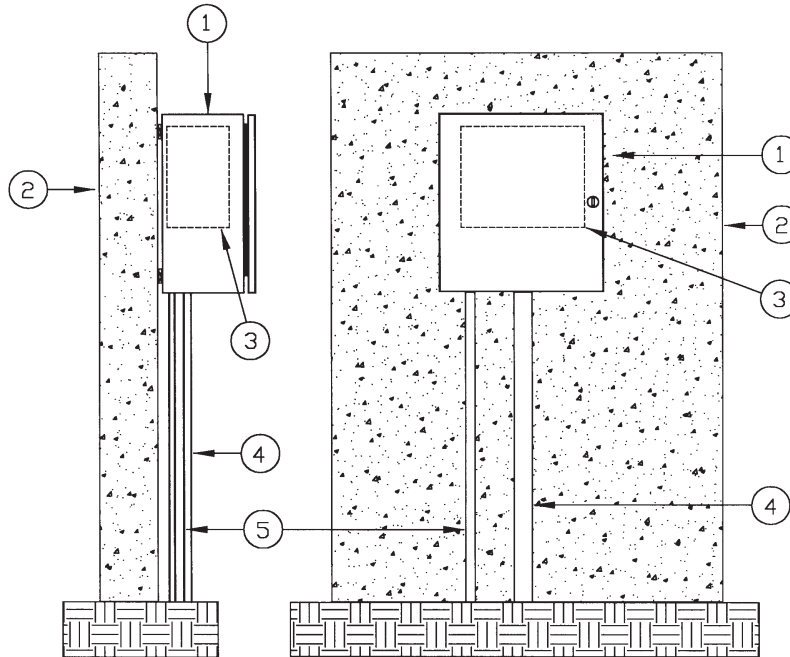
The cabinet shall be of a weather resistant nature manufactured entirely of 304 grade stainless steel. The main housing shall be louvered to deflect against water spray, insects and dust. A stainless steel backboard shall be provided for the purpose of mounting electronic and various other types of equipment. The backboard shall

be mounted on four stainless steel bolts that will allow for removal of the backboard. The cabinet door shall have a continuous stainless steel piano hinge on one side with a stainless steel cam style lock mounted in the door. The cabinet shall be equipped with a teardrop, hollow center, watertight, thermo-plastic door seal. The bottom of

the cabinet shall be prepunched for electrical conduit. The above described product shall be a NEMA TYPE 3R Rainproof Enclosure as listed by Underwriter Laboratories, Inc.

# Model LD-18SW

## INSTALLATION DETAILS



- 1. Controller cabinet
- 2. Wall
- 3. Automatic controller
- 4. 24-volt conduit
- 5. 120-volt conduit

Note:  
Install controller cabinet to a wall as per manufacturer's installation instructions.

## SPECIFICATIONS

The cabinet shall be of a weather resistant nature manufactured entirely of 304 grade stainless steel. A stainless steel backboard shall be provided for the purpose of mounting electronic and various types of equipment. The backboard shall be mounted on four stainless steel bolts that will allow for removal of the backboard.

The cabinet door shall have a continuous stainless steel piano hinge on one side with a stainless steel cam style lock mounted in the door. The cabinet shall be manufactured with a continuous drainage channel which mates with a teardrop shaped, hollow center, watertight, thermoplastic door seal. The bottom of the cabinet shall be prepunched

for electrical conduit. The above described product shall be a NEMA TYPE 3R Rainproof Enclosure as listed by Underwriter Laboratories, Inc.