



### COMMERCIAL SERVICE PEDESTAL

- Provides metered power distribution for street lighting, parking lot lighting, traffic signal circuits, private development lighting, signage, irrigation, pump stations, and cellular applications
- Caltrans Type III-AF and Caltrans Spec ES-2D Compliant
- 100% stainless steel welded construction provides ultimate protection against corrosion and vandalism
- Flip top allows for full exposure of meter compartment
- Top locks accept 5/16 padlock and utility seal
- All stainless steel construction, powder coated
- Optional colors, standard gray
- Weather and vandal resistant

### FEATURES

- Standard Voltage 120/240 V, 1 Phase 3W
- Meter Socket: 4 Jaw, 100 Amp
- Main Breaker: 100 Amp, 10K AIC
- Meter Socket with Test Blocks
- Utility Landing Lugs: 200 Amp
- Flip Top Meter Door
- Lug Style Busses
- Access Panels Designed for Padlock & Utility Seal
- Template with Anchor Bolts
- 5 Year Limited Warranty

### OPTIONS

- Meter Socket: 5 Jaw, 100 Amp
- Maximum Voltage: 240 V, 1 Phase, 3W
- Higher AIC Available: 22K, 42K
- Powdercoat Colors Available
- Optional Time Clock, Lighting & Contact Block

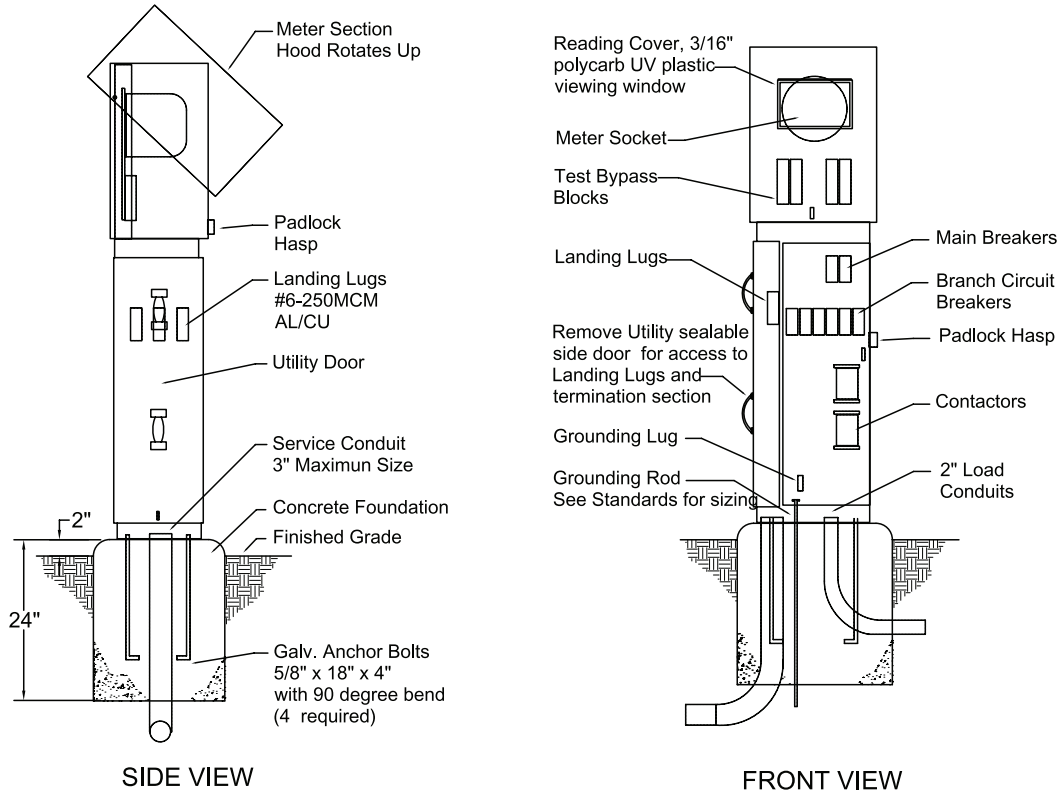
### SPECIFICATIONS

- Caltrans Type III-AF Compliant
- Caltrans Spec. ES-2D Compliant
- 16 Gauge Stainless Steel Welded Construction
- Vandal Resistant Enclosure
- Listed by Underwriters Laboratories, Inc.
- Complies with EUSERC 308
- Rainproof Type 3R Rated
- UL 508A Panel Shop



**CSP-A SERIES METERED ENCLOSURE**

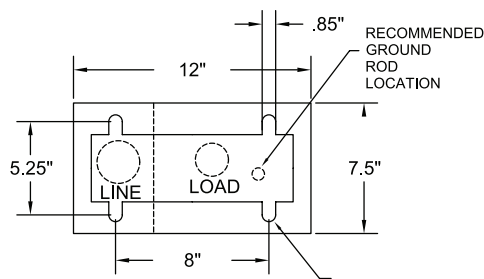
Designed to supply metered power to remote locations. Typical applications include street lighting, traffic signal circuits, parking lot lighting, highway and pump stations and cellular applications.



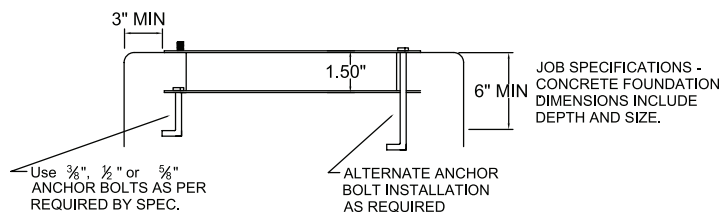
**METER SPECIFICATIONS**

- 0-100 Amp Load Center with up to 6 Circuits
- 120V & 240V 1 Phase Models Available
- Test Blocks
- UL Listed, NEMA Type 3R Rated
- EUSERC 308 Compliant Commercial Meter Pedestal
- Cabinet Profile with Removable Doors
- 17" W x 48" H x 9" Deep
- 5 Year Limited Warranty

Meter Base Stainless Steel (Top View)



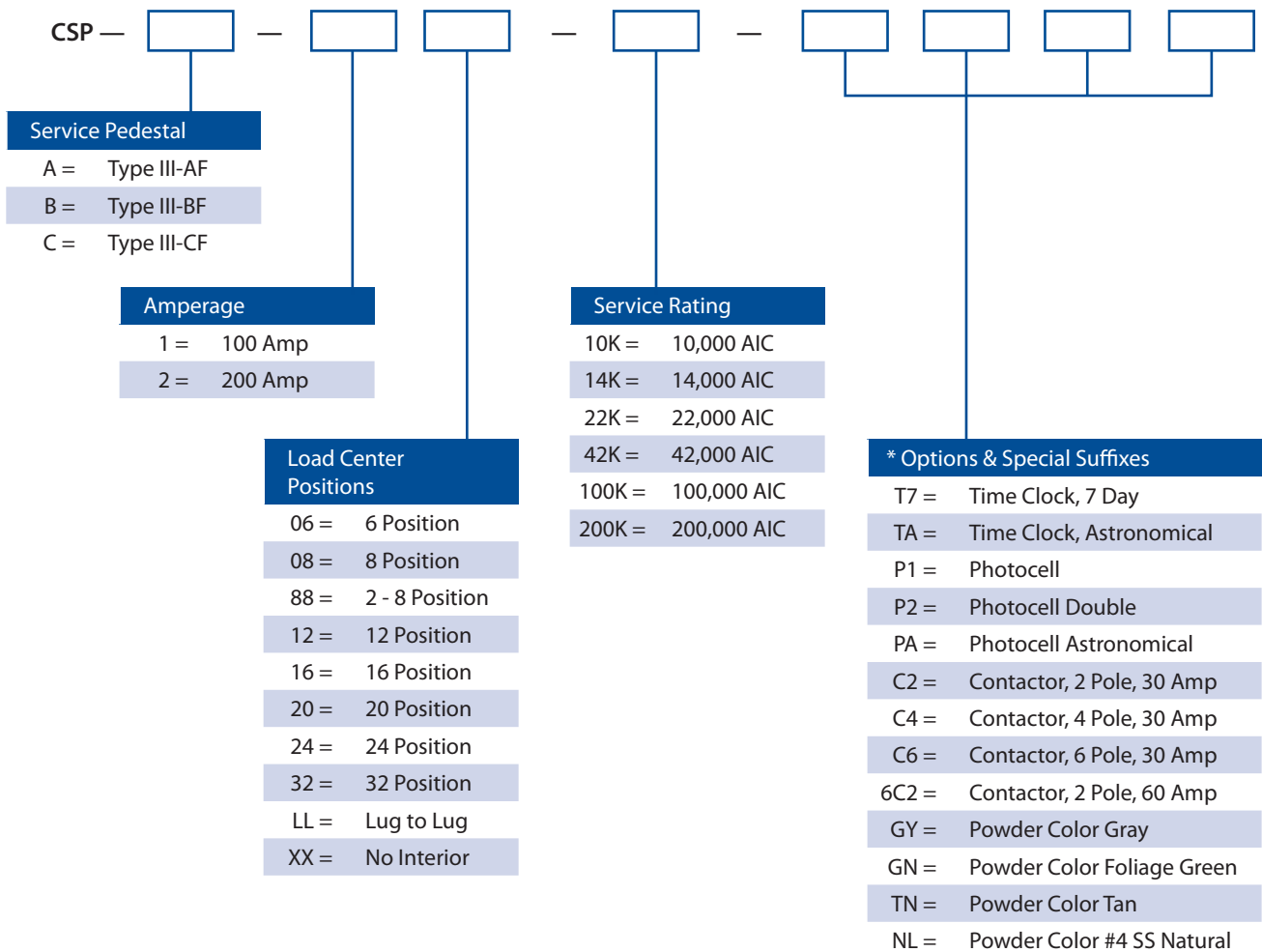
Meter Base Stainless Steel (Side View)



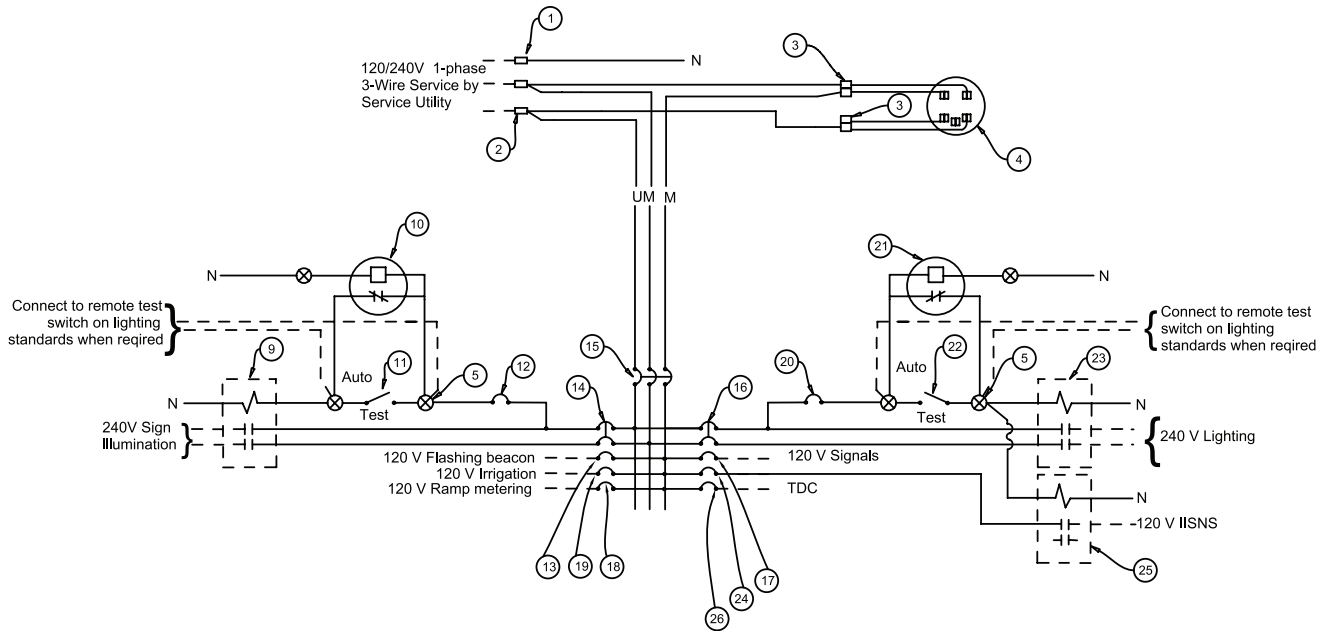
**CSP-A MODEL NUMBERS & SERVICE OPTIONS**

Model No.	Amps	Voltage	Service	Main	Load Center
CSP-A-106-10K-*	100A	120/240	Metered	100A	6 Position
CSP-A-106-42K-*	100A	120/240	Metered	100A	6 Position

**PART NUMBER CONFIGURATION – SERVICE PEDESTALS**



**CSP-A TYPE III AF CT WIRING DIAGRAM**



**CSP-A TYPE III AF CT SINGLE LINE**

