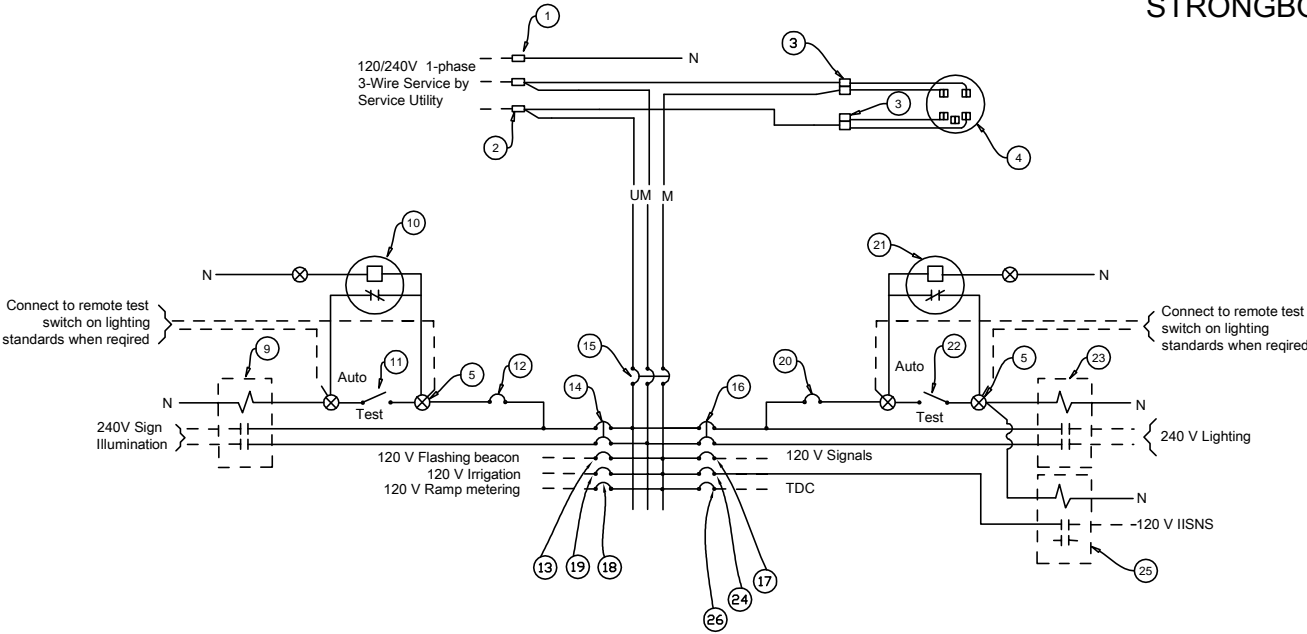


STRONGBOX CSP A-SERIES WIRING DIAGRAM

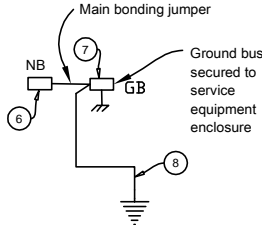
ALL WIRING AND FOUNDATION CONSTRUCTION TO CONFORM TO CALTRANS 2006 STANDARD PLANS ES-2D

GENERAL NOTES:

1. Voltage ratings of service equipment shall conform to the service voltages indicated on the plans.
2. Unless otherwise indicated on the plans, service equipment items shall be provided for each service equipment enclosure as shown.
3. Test switch may be remote activated from lighting standards as required.
4. Neutral lug and buss shall be isolated from the service equipment enclosure.
5. Meter Sockets shall be 5 clip type
6. The landing lug shall be suitable for multiple conductors.
7. Type 5 photoelectric control shall be used unless otherwise indicated.



TYPE III-A SERVICE (120 / 240 V) EQUIPMENT LEGEND					
ITEM No.	COMPONENT	NAME PLATE DESCRIPTION	ITEM No.	COMPONENT	NAME PLATE DESCRIPTION
1	Neutral lug		14	30A, 240V, 2P, CB	Sign Illumination
2	Landing lug (Note 6)		15	100A, 240V, 3P, CB	Main Breaker
3	Test bypass facility		16	30A, 240V, 2P, CB	Lighting
4	Meter socket and support		17	50A, 120V, 1P, CB	Signals
5	Terminal blocks		18	30A, 120V, 1P, CB	Ramp Metering
6	Neutral bus		19	20A, 120V, 1P, CB	Irrigation
7	Ground bus		20	15A, 120V, 1P, CB	Lighting Control
8	Grounding electrode		21	Photoelectric unit (Note 7)	
9	30A, 2PNO, Contactor	Sign Illumination	22	15A, 1P, Test switch	Lighting Control
10	Photoelectric unit (Note 7)		23	60A, 2PNO, Contactor	Lighting
11	15A, 1P, Test switch	Sign Illumination Test Switch	24	15A, 120V, 1P, CB	IISNS
12	15A, 120V, 1P, CB	Sign Illumination Control	25	30A, 2PNO, Contactor	IISNS
13	15A, 120V, 1P, CB	Flashing Beacon	26	20A, 120V, 1P, CB	Telephone Demarcation Cabinet



STRONGBOX
VIT PRODUCTS, INC.
2063 WINRIDGE PLACE
ESCONDIDO, CA. 92029
800-729-1314
www.strongbox.com

CSP-A Series

Project	Sheet
Date	
Scale	