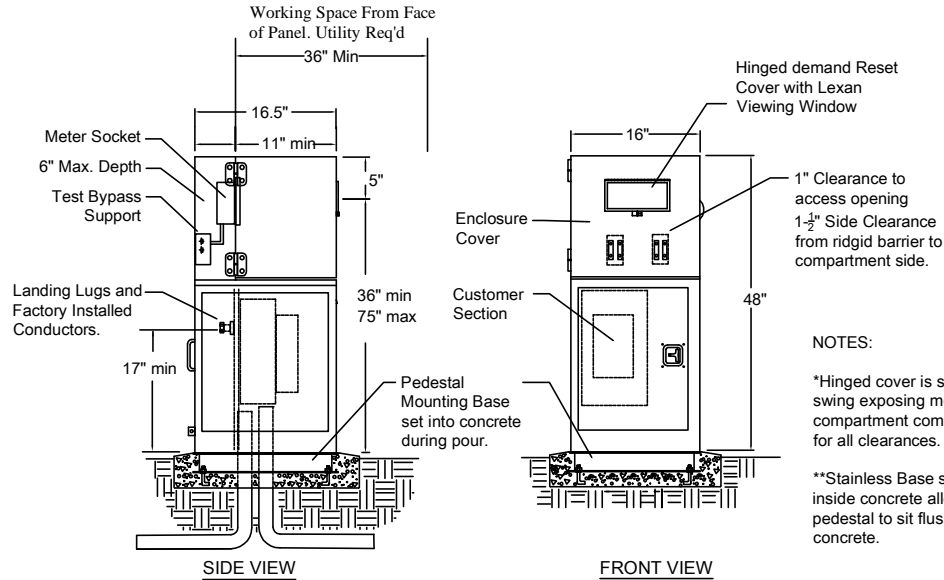


STRONGBOX CSP B-SERIES PEDESTALS

Commercial Service Pedestals 0-200 Amps
 Manufactured to meet Utility Specifications EUSERC 308, Type III



NOTES:

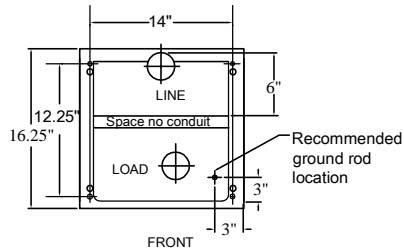
*Hinged cover is side swing exposing meter compartment completely for all clearances.

**Stainless Base set inside concrete allowing pedestal to sit flush on concrete.

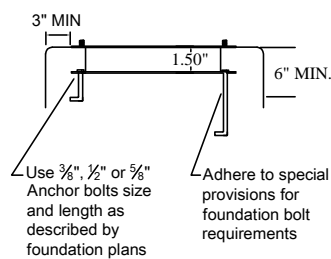
NOTE:
 Foundation Specifications:
 Ensure foundation specifications adhere to local special provisions.

Strongbox Mfg Stainless Base

Meter Base Stainless Steel (Top View)



Meter Base Stainless Steel (Side View)



Utility Approvals:

SIGNATURE: _____

DATE: _____

Letter of approval contingent on Meter Pedestal manufactured in accordance with EUSERC 308 Specifications and its revisions.

NO DESIGN MODIFICATIONS ARE ALLOWED

Utility Termination Section

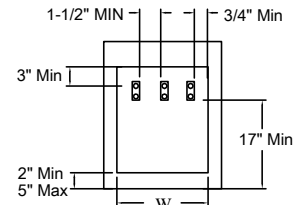
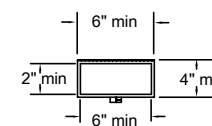


TABLE 1 - MIN. DIMENSIONS

SERVICE	W
1PHASE	10-1/2"

Hinged Demand Reset Cover



STRONG BOX
 VIT PRODUCTS, INC.
 2063 WINRIDGE PLACE
 ESCONDIDO, CA. 92029
 800-729-1314
 www.strongbox.com

CSP-B Series

MODELS

Project _____ Sheet _____
 Date _____
 Scale _____