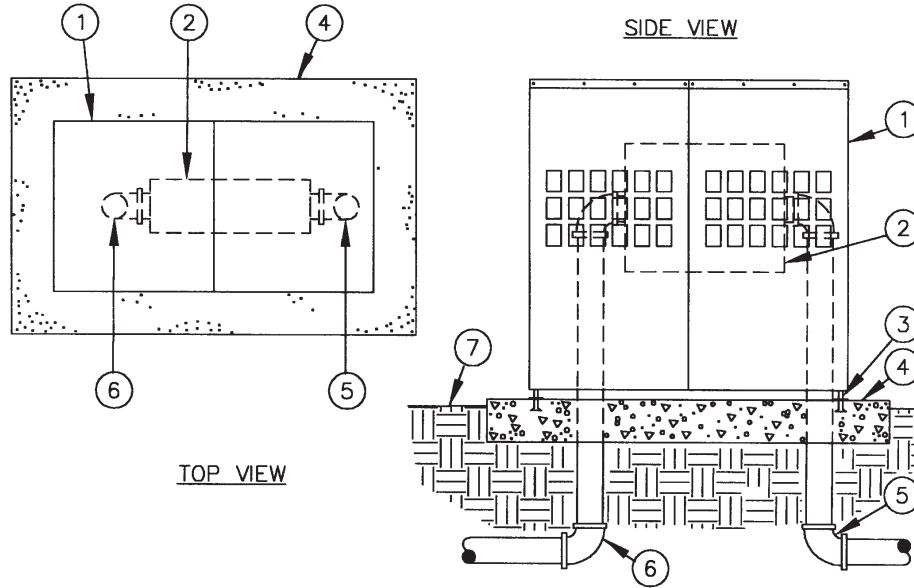


Models: SBBC-15AL, SBBC-30AL, SBBC-45AL, SBBC-60AL

INSTALLATION DETAILS



- | | |
|---|--------------------------------|
| 1. Aluminum Backflow Enclosure | 5. Water Service Inlet Piping |
| 2. Backflow Preventer | 6. Water Service Outlet Piping |
| 3. Anchor Rod (typical) | 7. Finish Grade |
| 4. Poured Concrete Base – 6” minimum thickness – extend 4” beyond outside dimensions of enclosure | |

SPECIFICATIONS

The backflow enclosure shall be of a vandal and weather resistant nature manufactured entirely of marine grade aluminum alloy 5052-H32, with a wall thickness of one eighth inch. The mounting base shall be manufactured entirely of stainless steel. The main housing shall be of solid sheet construction punched on the sides with a rectangular pattern for viewing back-

flow operation. The length of the enclosure shall be expandable to allow for site adjustment. The enclosure shall have a mounting lip on one end and a locking mechanism on the other end. The mounting base shall be submerged into the concrete a minimum of two inches, positioning the enclosure two and one half inches above the concrete for drainage

purposes. The locking mechanism shall be of the full release type which allows for complete removal of the enclosure from its mounting base without the use of tools. The handle controlling the locking mechanism shall be concealed within the surface of the enclosure and provide for a padlock.